

OF EARTH

A LOVE LETTER TO THE LANDSCAPE
ANTIPODES GALLERY, SORRENTO



Presenting a collection of paintings from the Gippsland studio of Lucy Hersey. This intimate collection gives an insight into the artist's private practice, curiosity and deep appreciation for the landscape.

Small *en plein air* studies inform larger paintings in handmade 'earth paint' – processed from locally collected clays and natural pigments.

Recent sketches on paper made with hand milled naturally-pigmented oil paint represent a period of studio research and experimentation into the process and history of paint making.

Painted works are accompanied by three-dimensional interpretations of the Gippsland landscape. Ceramic hillsclapes and fired 'paintings' of locally collected clay made in collaboration with esteemed artist and friend Laura Dortmans.

These works together pay homage to the artist's deep love for and innate understanding of the landscape, a compulsion for fossicking, collecting, and the use of natural materials in her work. A desire for a more sustainable life and art practice, and a reflection on the fragility of the environment.

O dirt, help us find ways to serve your
life, you who have brought us forth, and
fed us, and who at the end will take us
in and rotate with us, and wobble, and
orbit.

Sharon Olds



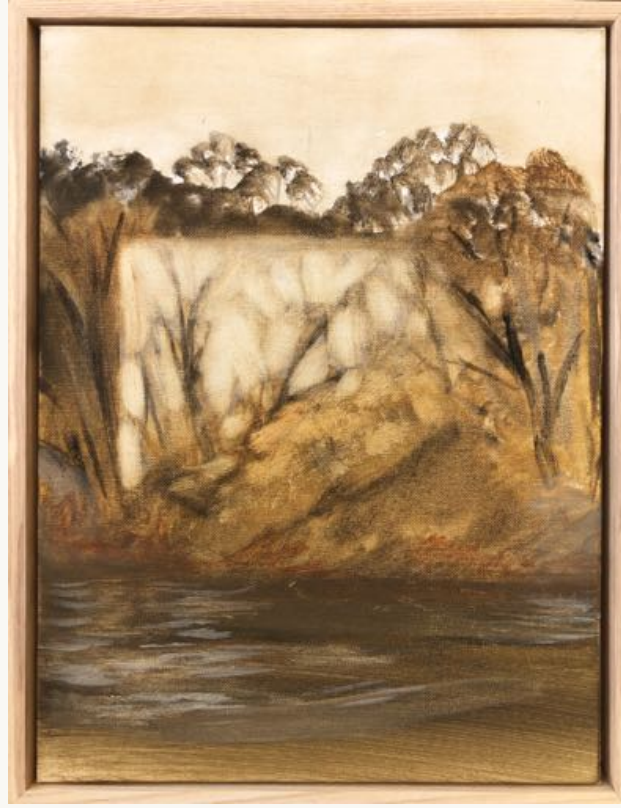
Friend Tree (2023). Ground earth and clay on cotton. 30x40cm \$650



Cool change (en plein air 2023) earth on board. 25x30cm. unframed \$150



Loch Hillscape (2023) Ground earth and clay on cotton. 60x70cm, Australian hardwood frame. \$1500



Reflections from boat windows (2023)
ground earth and clay on cotton.
40x50cm, Australian hardwood frame.
\$780

*Shortlisted for the Lethbridge Landscape
Prize Salon des Refuses 2023*



Autumn in Loch (2023). En plain air,
Oil on paper. A5. Unframed. \$85



Casuarina study 1 and 2 (2023). Hand milled earth pigment oil paint on paper.
A5, unframed. \$55 each



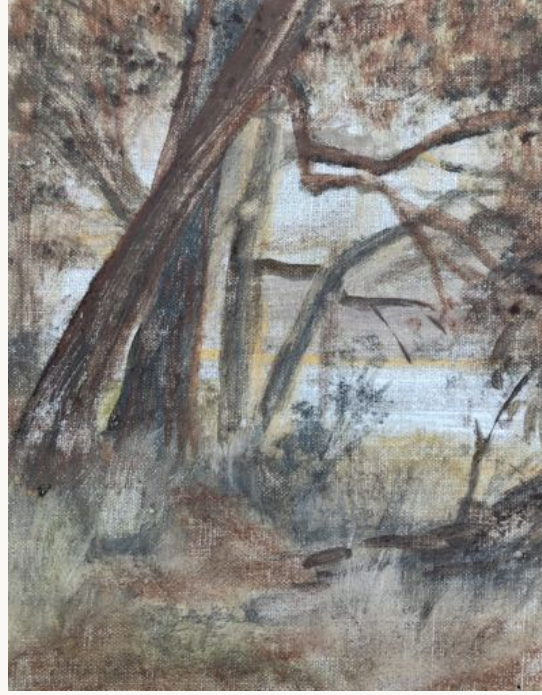
Tucky's Hills, and Study for sitting under a black wattle (2023). Oil on board, 12x17cm. En plein air \$150. Unframed.



Quiet Balcombe (2023). Ground earth and clay on cotton. 30x35cm \$580



Sitting under a black wattle (2023) hand milled earth pigmented oil paint on cotton. 30x30cm, Australian hardwood frame. \$630



The Lake through the trees (en plein air 2023) earth on board. unframed 20x25cm. \$150



Study for the contemplation place (2023).
Oil on board. 12x17cm. Unframed \$200

The contemplation place (2023).
Ground earth and clay on cotton.
100x76cm. Australian hardwood
frame \$2200





Fragility (2023) Shells, bones and seeds packed with clay and balanced without adhesive in small assemblages on mirror. Reflections on the tenuous balance and harmony found in nature. NFS



Turtons Creek (2022) Ground earth and clay on natural linen. 91x60cm, Australian hardwood frame. \$1200



We Drive past the CFA water point (2022) Ground earth and clay on cotton 100x76cm, Australian hardwood frame. \$1200



Beach plants, Jam Jerrup (2022) Ground earth and clay on natural linen. 100x76cm, Australian hardwood frame. \$1200



Fallen Casuarina (en plein air 2023) Ground earth and oil on linen board. 25x30cm, unframed. \$150



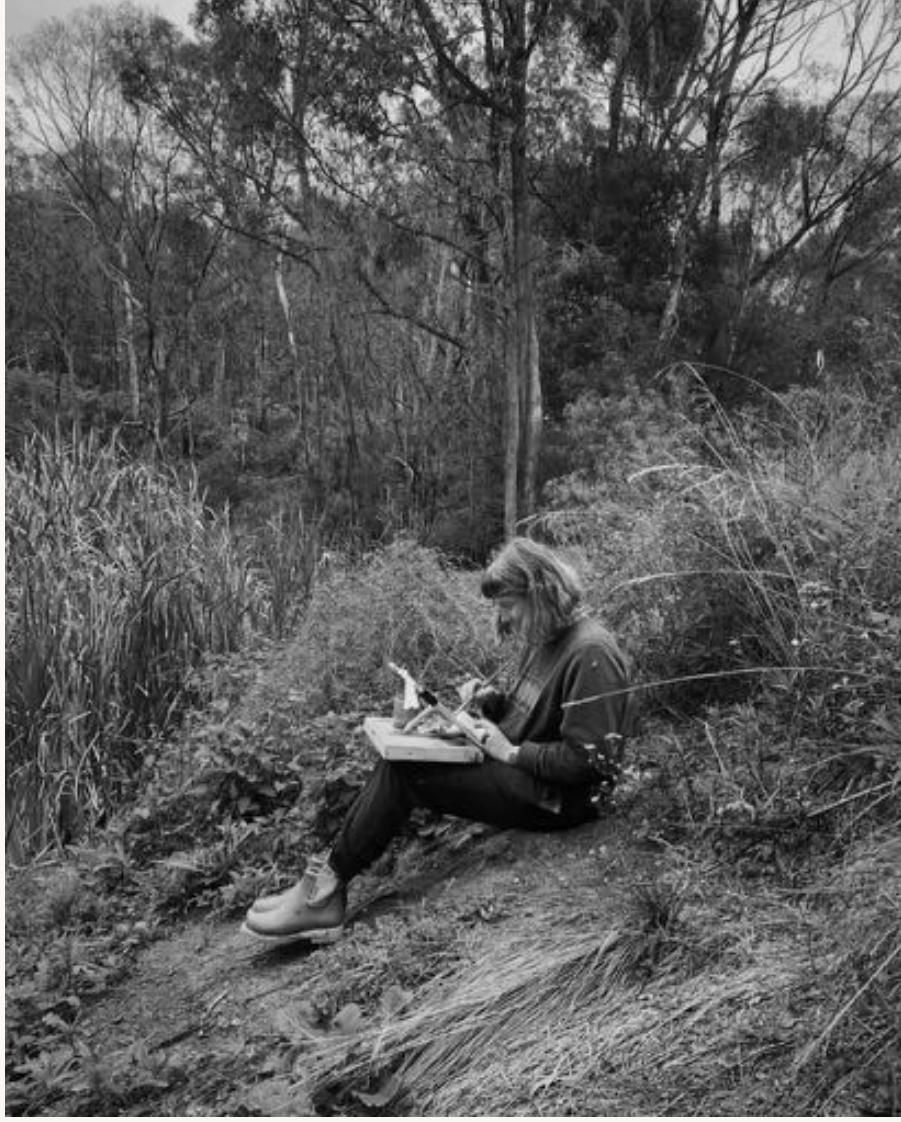
Clay landscapes (2022) NFS
Hand built pottery forms made with local
clays and glazes. (wall hanging)
Left, *Skyscape*,
Right, *on digging for clay 1-4*





Clay landscapes (2022) NFS
Hand built pottery forms made with local clays and glazes. (wall hanging)
Hillscapes 1 & 2





I acknowledge the traditional owners of the earth I use to make my work, and on whose land I forage and collect my materials. I am grateful for the knowledge and traditional skills that have been generously shared with me, and in all things, endeavour to act with respect and kindness towards the environment. I am deeply grateful for your interest in my work. Lucy.

Representation

Represented by Gallery Raye (online/Sunshine Coast).

Residencies and awards

- 2023 – Lethbridge Gallery Landscape Prize, *Salon des Refuses*.
Gippsland Art Gallery Summer School – Vic
- 2022 – FLOAT Inc - artist in residence, Lake Tyers - Vic.
Ravenswood Australian Womens Art Prize – Shortlisted finalist.
- 2021 – *Artists in Spaces* – South Gippsland Shire Council artist in residency. Mirboo North.

Commercial and community projects

- 2023 – *South Gippsland Shire Arts Advisory Council* board member
Director of *On Clarence* - South Gippsland Artist Collective and studios.
- 2022 – *ARC winery art label* release - 12 paintings for 12 different wines by the ARC winery (Warragul).
Large works commissioned for Farmers Daughters Collins Street and Federation Square restaurants. Accompanying TV interview for Channel 9 production, 'Good Chef Hunting' with Alejandro Saravia for Farmers Daughters Victoria restaurant opening.
Loch Village Art Council – small volunteer group coordinating and funding infrastructure/art projects and local exhibitions
- 2018 – Coordinated an artist in residence program, embedding nine artists within the Australian Regenerative Medicine Institute over 12 months.

Solo exhibitions

- 2022 – *Golden Moments* - Gallery Raye, Sunshine Coast, QLD
ARTEMIS - Little Oberon Gallery, Fish Creek, Vic
- 2021 – *My Favourite Places* – Blackroom Gallery, Flinders, Vic
Steep – Mirboo North, Vic
- 2018 – *Fond Farewell* – Meeniyana Art Gallery, Vic

Group Exhibitions (selected)

- 2023 - *Wet Areas* - Gallery Jones Art and Frame Store, Ripponlea, VIC
Bryter - Tyger Gallery, Yass, NSW
En Plein air - Gippsland Art Gallery, Sale, VIC
- 2022 – *WRAP* – East Gippsland Art Gallery, Bairnsdale
Summer Smalls – Cook Street Collective, Flinders, Vic
The Secret Garden – Loch, Vic (Curated by me)
Spring Tide - Brunswick Street Gallery, Fitzroy, Vic
Naturalistic - Kerri Greens Barrel room, Flinders, Vic
Nocturne - Brunswick Street Gallery, Fitzroy, Vic
Incognito – Paddington, Sydney
MATERIAL OBSESSION – Blackroom Gallery, Flinders, Vic (Curated by me)
Ravenswood Womens Australian Art Prize Finalists Exhibition, NSW
Infinite Space – The Moree Gallery, Moree, NSW
Immeasurable (International Womens Day) – Meeniyana Art Gallery
Landscape Interrupted – Stockyard Gallery, Foster, VIC
- 2021 – *Earthworks* – Meeniyana Art Gallery, Meeniyana, Vic
FLORA – Heritage Hill Gallery, Dandenong, Vic
- 2020 – *Incognito* – Paddington, Sydney
My Still Life – No Vacancy Gallery, Melbourne
Home – The Corner Store Gallery, Orange, NSW
O&W – Iceworks, Lakes Entrance, VIC
Winter Lights – Iceworks, Lakes Entrance, VIC
- 2018 – *Speaking about self care* – Maggies Art Space, Collingwood, Vic
Regeneration, an exhibition – St Heliers Street Gallery, Abbotsford, Vic (Curated by me)
Small works – YEPgallery, Foster, Vic
Decade – Incub8r gallery, Fitzroy, Vic